

How to configure caller recognition and screen-pop for:

SugarCRM Community

Supported versions: SugarCRM Community 6.5.X

Contact replication method: ODBC

Screen pop method: Url

Prerequisites

To replicate data via OLE/ODBC using a MySQL database, you'll have to install the 32-bit MySQL ODBC driver. Please check the MySQL website for more information

Configure a 32-bit System DSN datasource, which can be accessed by the Recognition Update service.

On 64-bit operating systems, make sure you configure the 32-bit driver using the 32-bit ODBC data source administrator from "C:\Windows\SysWOW64\odbcad32.exe"

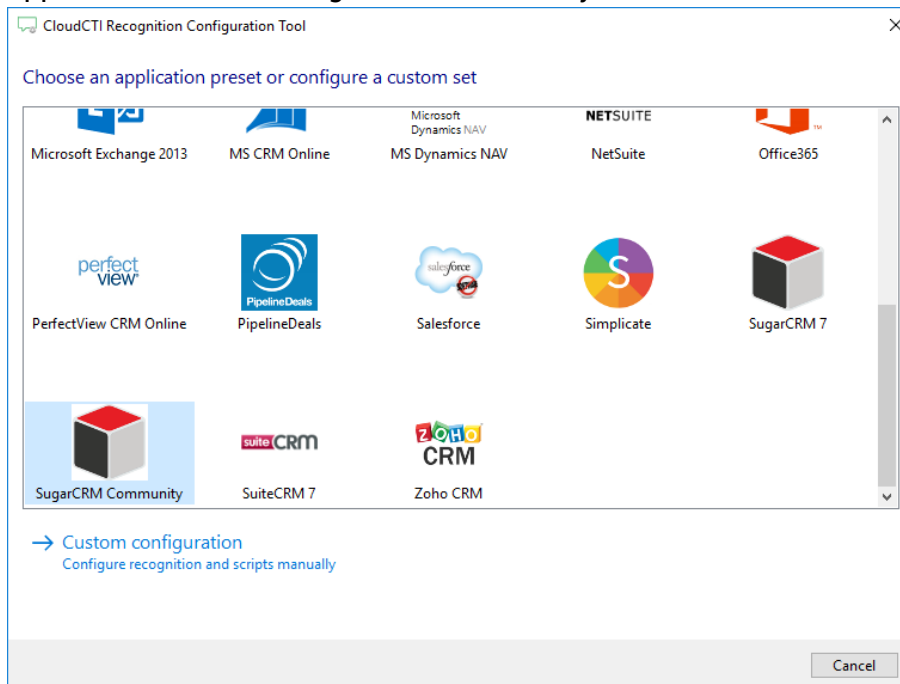
Notes

In the SugarCRM Community edition, you can click on a phone number hyperlink to dial. The first time your browser may request your permission to associate 'callto:' uri links with MakeCall.exe. If no phone icon is present you can still select a phone number and dial with the client hotkey

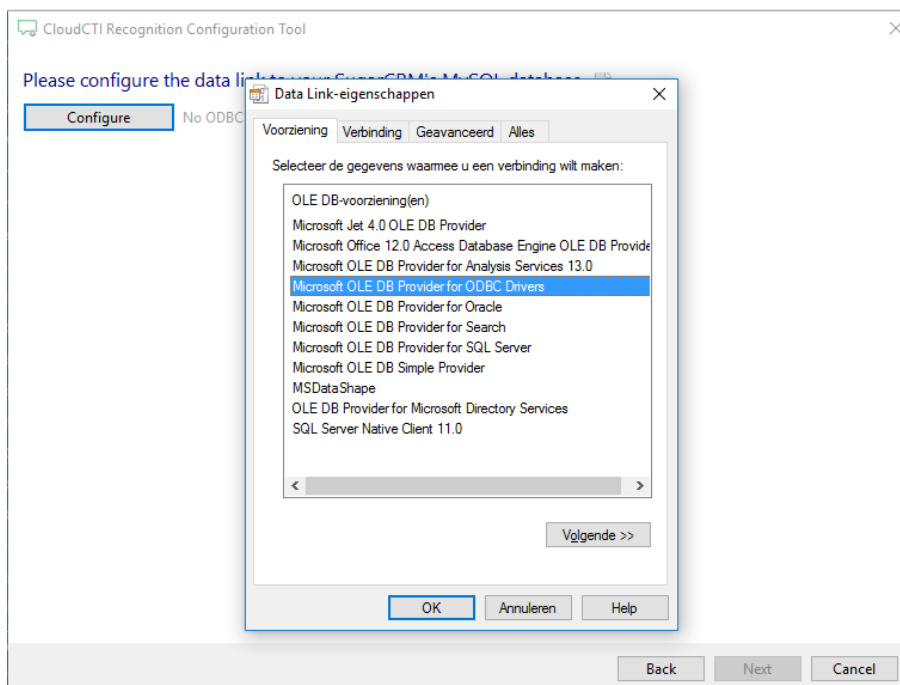
Office Phone:	+1 555 555 65
Fax:	+1 555 555 65
Shipping Address:	

Configuration steps

- 1) Start by clicking 'add recognition' in the [Recognition Configuration Tool](#) From the list of applications, choose 'SugarCRM Community', as shown below.



- 2) Press 'Configure' to open the Windows Data Link Properties dialog to configure your ODBC connection string. Select "Microsoft OLE DB Provider for ODBC drivers" and press the 'Next >>' button.



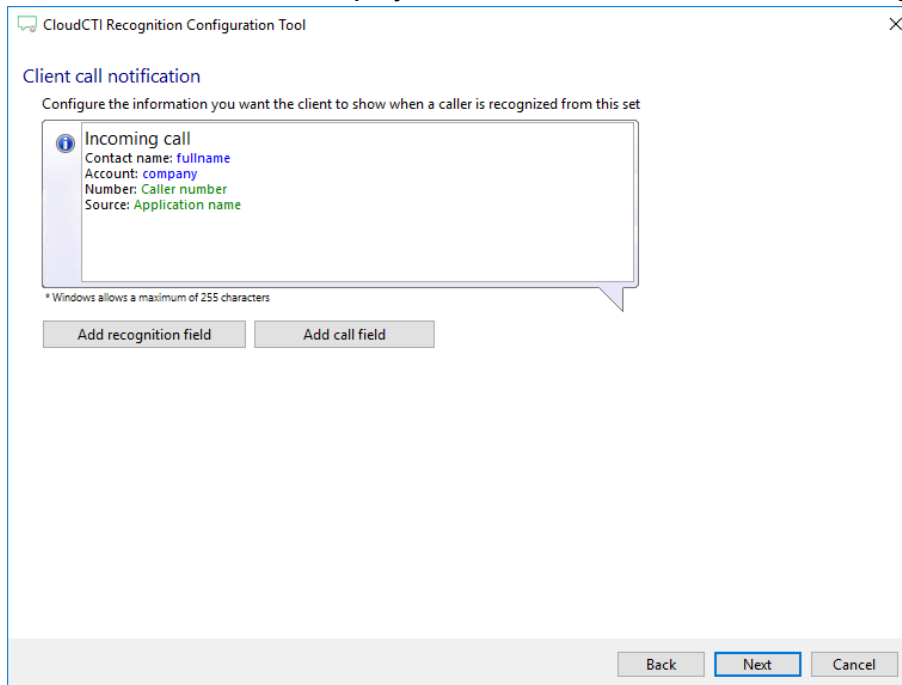
- 3) Select your Database and enter read access level credentials. Check 'Allow saving password' to make automatic replication possible. Press the 'Test Connection' button to ensure the credentials are valid. Then press 'OK' to continue.

The screenshot shows the 'Data Link-eigenschappen' dialog box with the 'Verbinding' tab selected. The 'Gegevensbronnaam gebruiken' radio button is selected, and 'SugarCRM Community' is chosen in the dropdown. The 'Wachtwoord' field is masked with dots, and the 'Opslaan van wachtwoord toestaan' checkbox is checked. The 'catalogus' dropdown is set to 'database'. A 'Verbinding testen' button is located at the bottom right of the dialog.

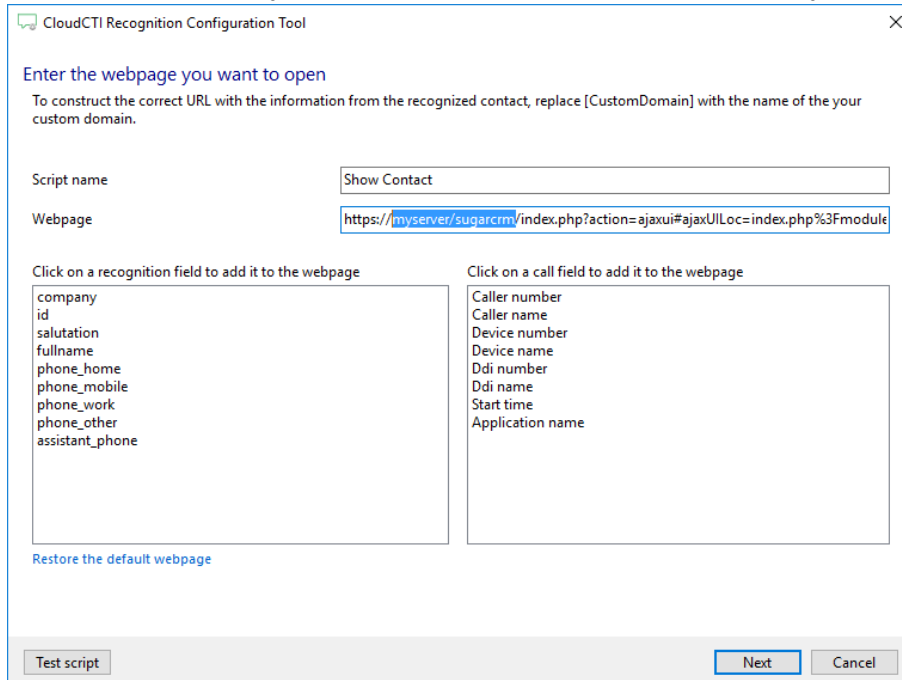
- 4) Once the ODBC connection is made, the wizard show available tables/views and an example query for SugarCRM Community.

The screenshot shows the 'CloudCTI Recognition Configuration Tool' dialog box. The 'Configure' button is highlighted. Below it, a tree view shows the database structure for 'bitnami_suitecrm', including tables like 'accounts', 'accounts_audit', 'accounts_bugs', etc. The 'Use an ODBC query' radio button is selected, and a query is entered in the text area: `select a.name AS company, c.id, c.salutation, concat(c.first_name,' ',c.last_name) as fullname, c.phone_home, c.phone_mobile, c.phone_work, c.phone_other, c.assistant_phone from contacts as c join accounts_contacts as ac on c.id = ac.contact_id join accounts as a on a.id = ac.account_id`. A 'Test query' link is visible below the text area. At the bottom, there are 'Back', 'Next', and 'Cancel' buttons.

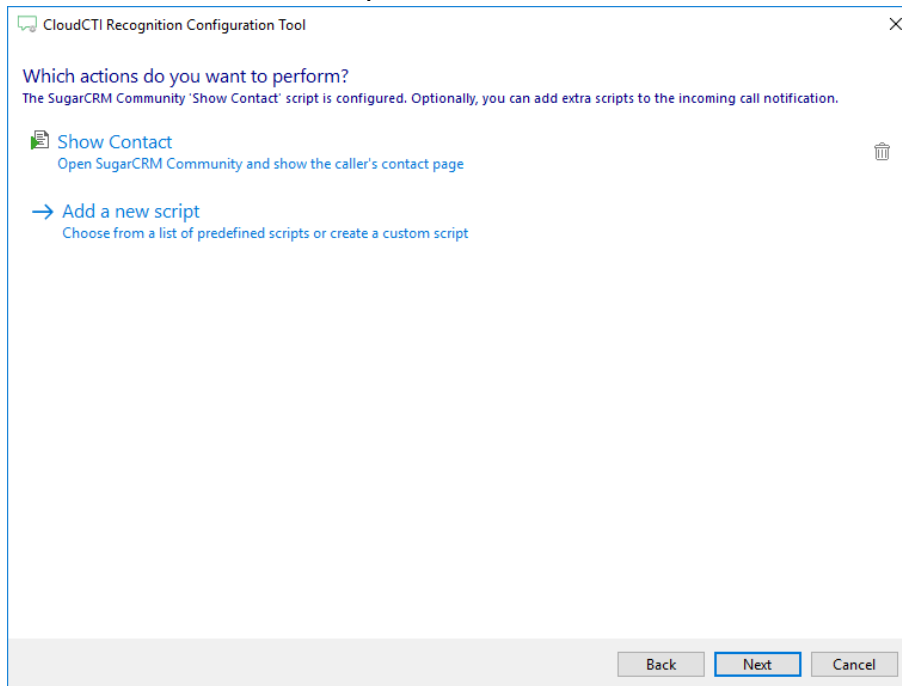
5) Choose which fields to display in the call notification on an incoming call.



6) By default, the popup is configured to open the CRM account card. Change the [CustomDomain] to your server and alter the URL, if necessary . Click 'next' to continue.



7) You can add additional scripts. Click 'next' to continue



8) Check the configuration summary and click finish to add the recognition from SugarCRM Community

