

How to configure caller recognition and screen-pop for:

# Microsoft Exchange 2013

Supported versions: Exchange 2013

Contact replication method: Exchange Web Services

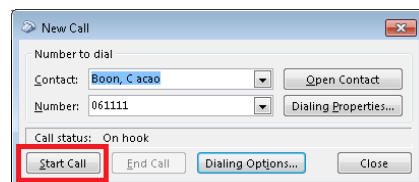
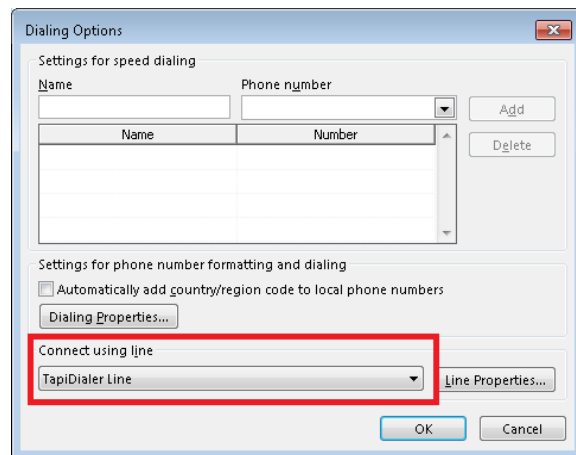
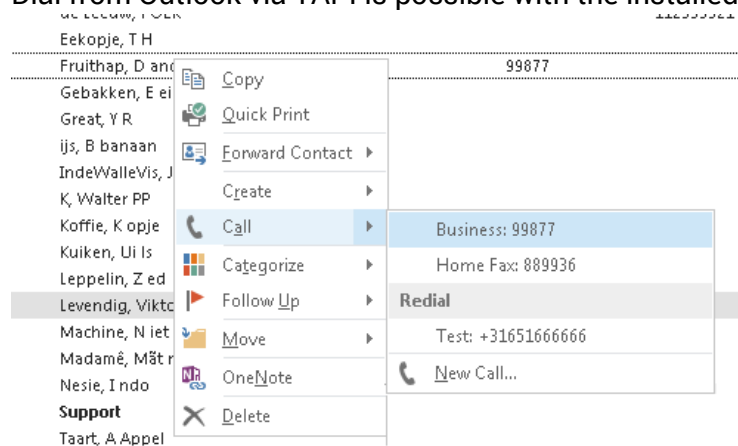
Screen pop method: COM/OLE

## Prerequisites

The Microsoft Exchange 2013 integration uses access Exchange web services for data replication, therefore an EWS URL is required.

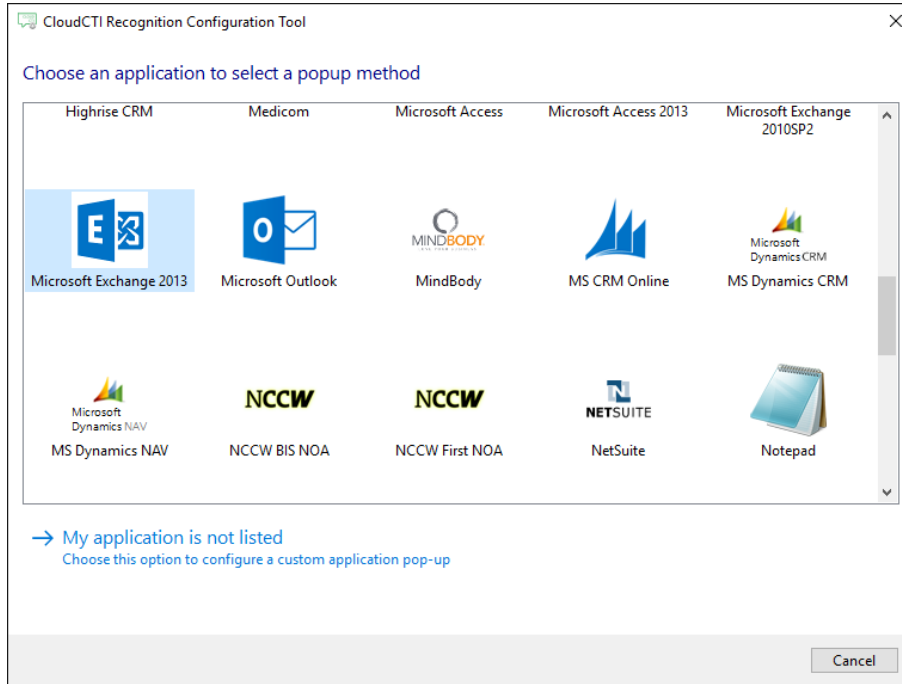
## Notes

Dial from Outlook via TAPI is possible with the installed TapiDialer Service Provider.

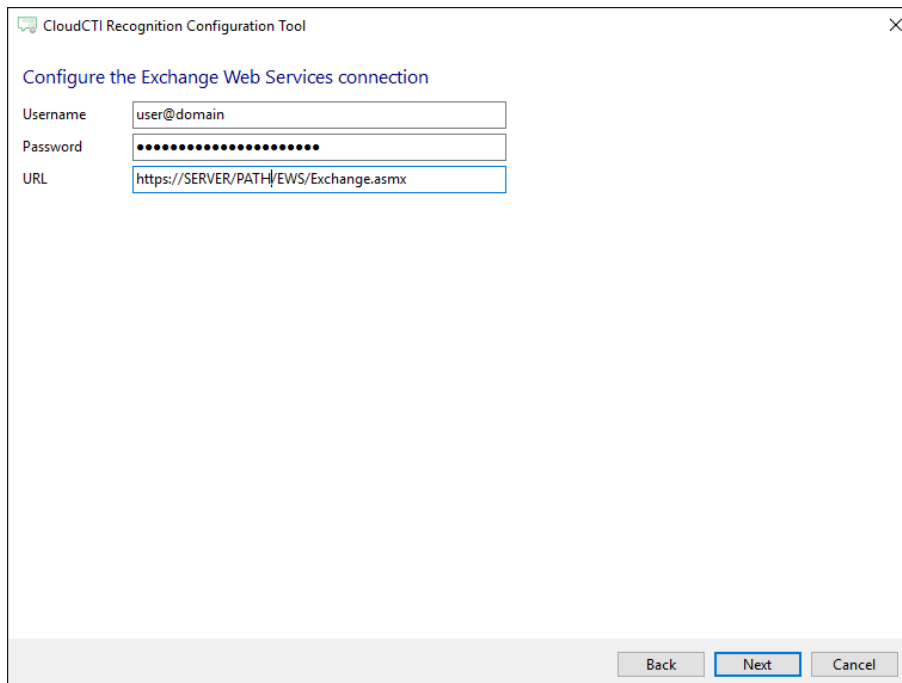


## Configuration steps

- 1) Start by clicking 'add recognition' in the [Recognition Configuration Tool](#) (this is done automatically if no configuration has yet been configured). From the list of applications, choose 'Microsoft Exchange 2013', as shown below.



- 2) Enter your Exchange 2013 server URL and credentials to access the contacts from your account



- 3) Check the configuration summary and click finish to add the recognition from Microsoft Exchange 2013

