

How to configure caller recognition and screen-pop for:

Gilde Handsoft Infodesk

Supported versions: Gilde Handsoft Infodesk

Contact replication method: CSV/TXT export

Screen pop method: DDE commands

Prerequisites

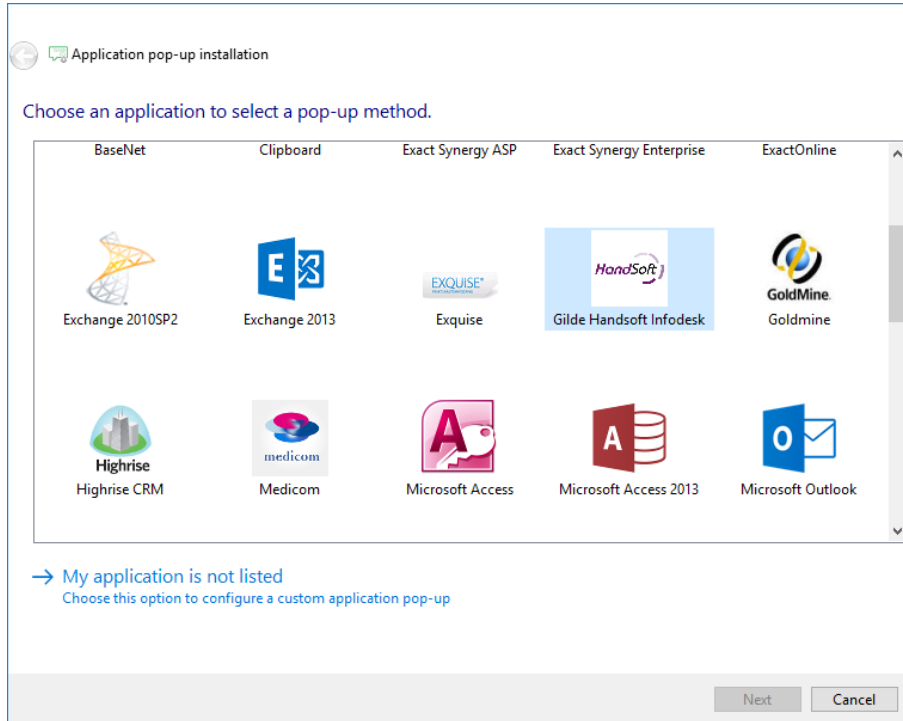
To recognize calling customers, the Recognition Tool requires a CSV/TXT export, containing a name, phone numbers and a unique search code, called "KorteNaam". This field "KorteNaam" is used in the DDE Command to open the contact card.

Notes

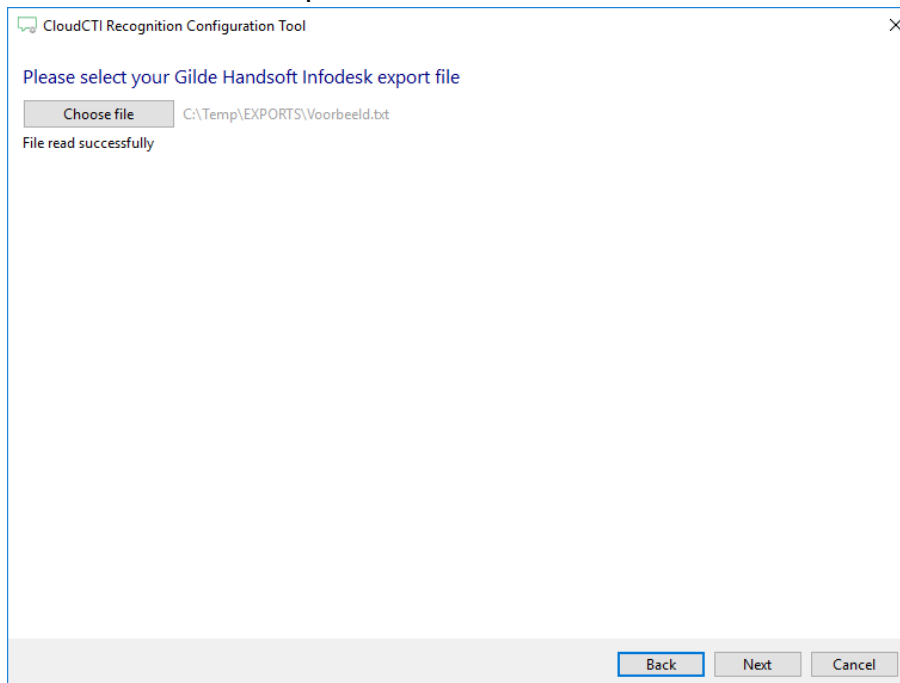
For outbound dialing, simply select a phone number and press <Pause> (default hotkey) to dial.

Configuration steps

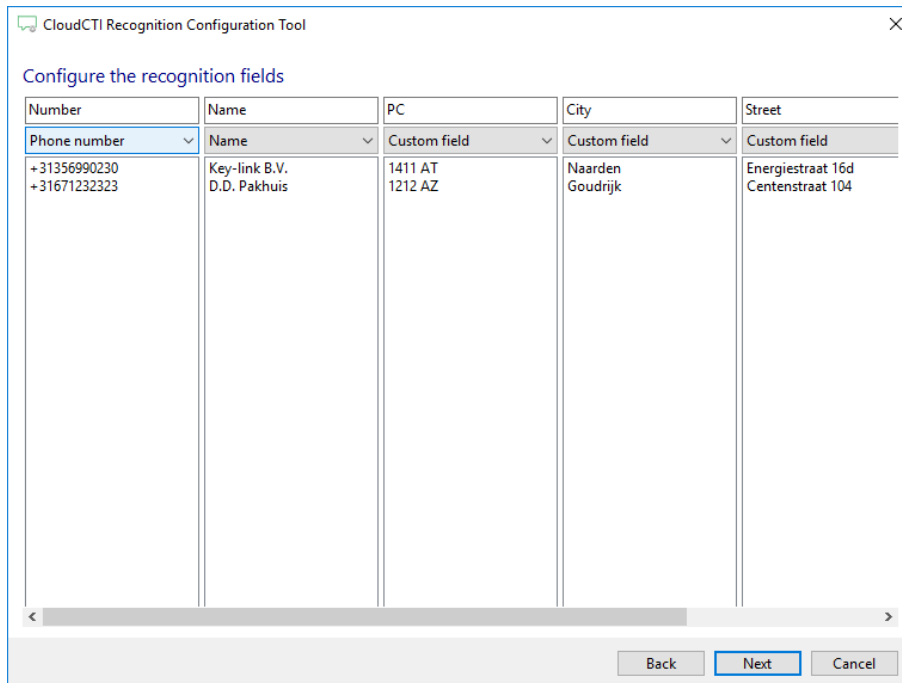
- 1) Start by clicking 'add recognition' in the [Recognition Configuration Tool](#) (this is done automatically if no configuration has yet been configured). From the list of applications, choose 'Gilde Handsoft Infodesk', as shown below.



- 2) Select the TXT/CSV export file to use

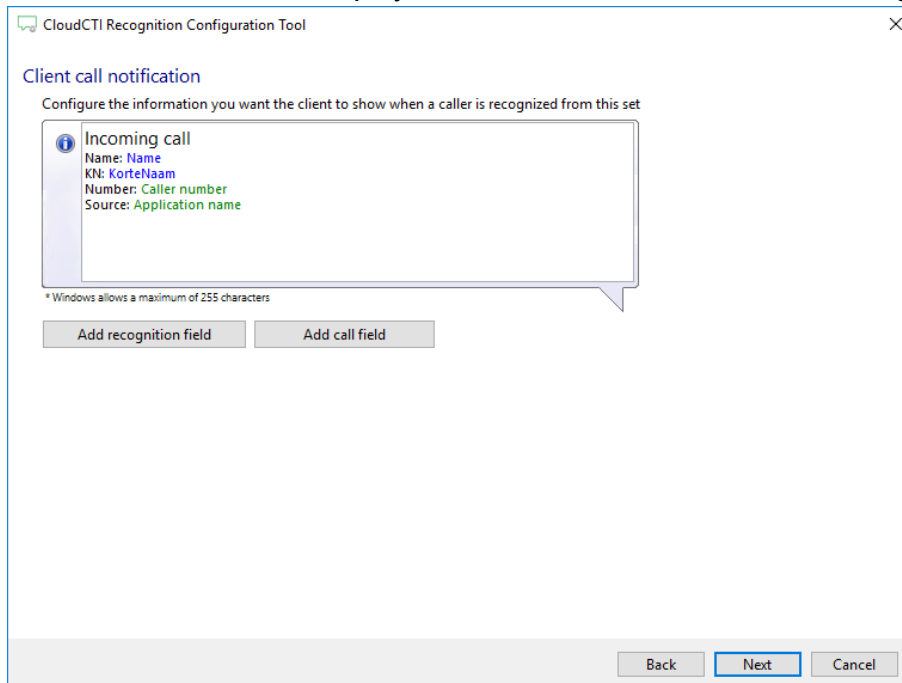


- 3) The CTI Wizard automatically detected phone number columns. The content of these columns will be indexed for matching the phone number of an incoming call. Click 'next' to continue



Number	Name	PC	City	Street
Phone number	Name	Custom field	Custom field	Custom field
+31356990230	Key-link B.V.	1411 AT	Naarden	Energistraat 16d
+31671232323	D.D. Pakhuis	1212 AZ	Goudrijk	Centenstraat 104

- 4) Choose which fields to display in the call notification on an incoming call.



Client call notification

Configure the information you want the client to show when a caller is recognized from this set

i Incoming call
 Name: Name
 KN: KorteNaam
 Number: Caller number
 Source: Application name

* Windows allows a maximum of 255 characters

Add recognition field Add call field

- 5) By default, the popup is configured to open the contact card. You may leave this default. Click 'next' to continue.

CloudCTI Recognition Configuration Tool

Provide the script name the required parameters

Script name

Parameters

DDEService

DDETopic

ExecuteMacroLine1

ExecuteMacroLine2

ExecuteMacroLine3

ExecuteMacroLine4

ExecuteMacroLine5

- 6) Check the configuration summary and click finish to add the recognition from Gilde Handssoft Infodesk

Application pop-up installation

Finish the application pop-up setup

Application
Gilde Handssoft Infodesk

Recognition
Recognition from import file C:\Voorbeeld.txt

Action
Open Gilde Handssoft Infodesk contact form